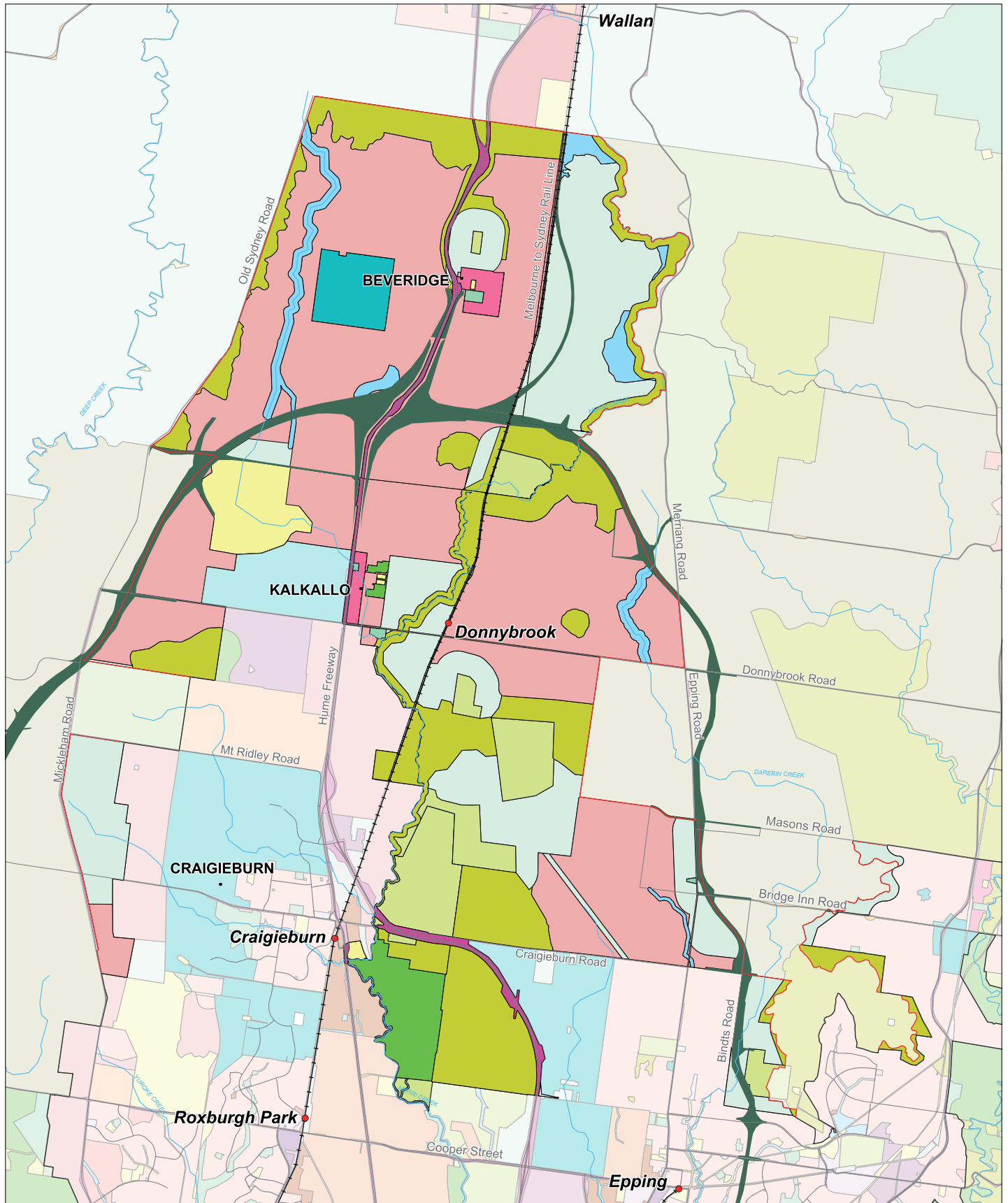
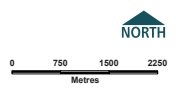


DELIVERING MELBOURNE'S NEWEST SUSTAINABLE COMMUNITIES LAND USE AND TRANSPORT INITIATIVES – MELBOURNE'S NORTH



<ul style="list-style-type: none"> — Land within existing Urban Growth Boundary — Amendment VC68 Urban Growth Boundary — Outer Metropolitan Ring/E6 Transport Corridor (For contextual purposes the OMR/E6 Transport Corridor has been highlighted, the map does not show the zones underneath) — Rail Line and Stations — Roads — Rivers / Creeks • Locality 	<p>Planning Zones</p> <ul style="list-style-type: none"> Residential 1 Zone Residential 2 Zone Residential 3 Zone Low Density Residential Zone Mixed Use Zone Township Zone Industrial 1 Zone Industrial 2 Zone Industrial 3 Zone Business 1 Zone Business 2 Zone Business 3 Zone Business 4 Zone Business 5 Zone Rural Living Zone Green Wedge Zone Green Wedge A Zone Rural Conservation Zone Farming Zone Rural Activity Zone Public Use Zone (other than transport) Public Use Zone (transport) Public Park and Recreation Zone Public Conservation & Resource Zone Road Zone: Category 1 Road Zone: Category 2 Special Use Zone Comprehensive Development Zone Urban Floodway Zone Capital City Zone Docklands Zone Priority Development Zone Urban Growth Zone Activity Centre Zone 	<p>Commonwealth Land (not in scheme)</p>
--	--	--



This map represents the information contained in Amendment VC68 as approved by the Minister for Planning. This amendment will not become operational until it has been ratified by Parliament and subsequently gazetted. The boundaries of land suitable for urban development will be refined by Precinct Structure Plans.

© The State of Victoria, 2010. The State of Victoria does not warrant the accuracy or completeness of information in this publication and any person using or relying upon such information does so on the basis that the State of Victoria shall bear no responsibility or liability whatsoever for any errors, faults, defects or omissions in the information.

